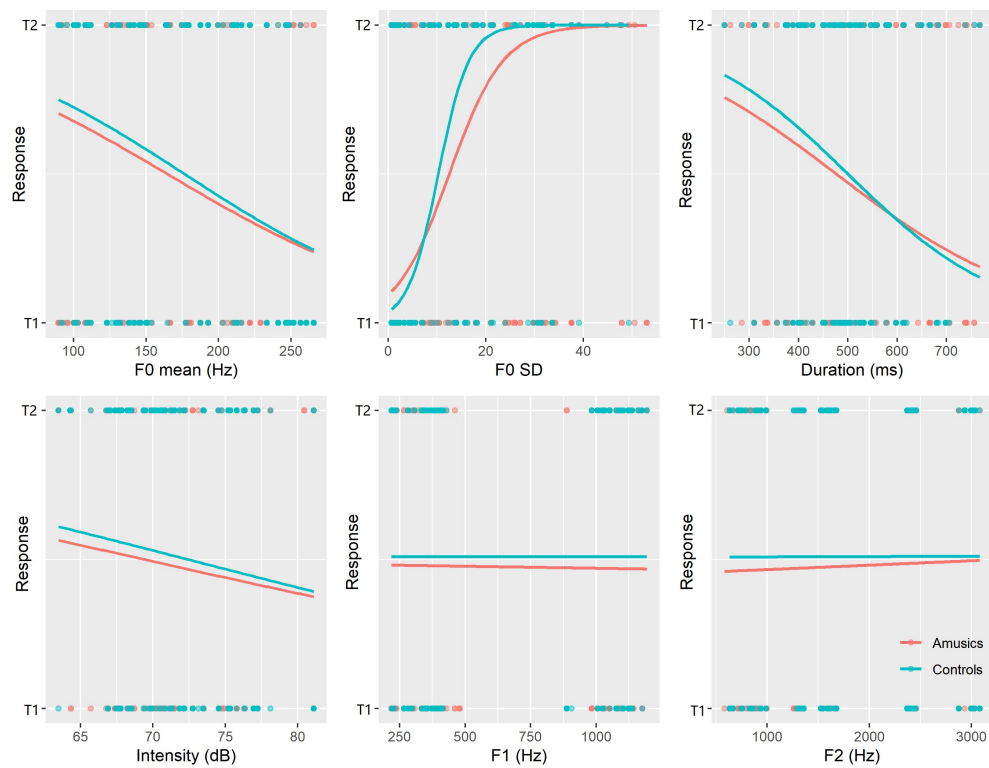
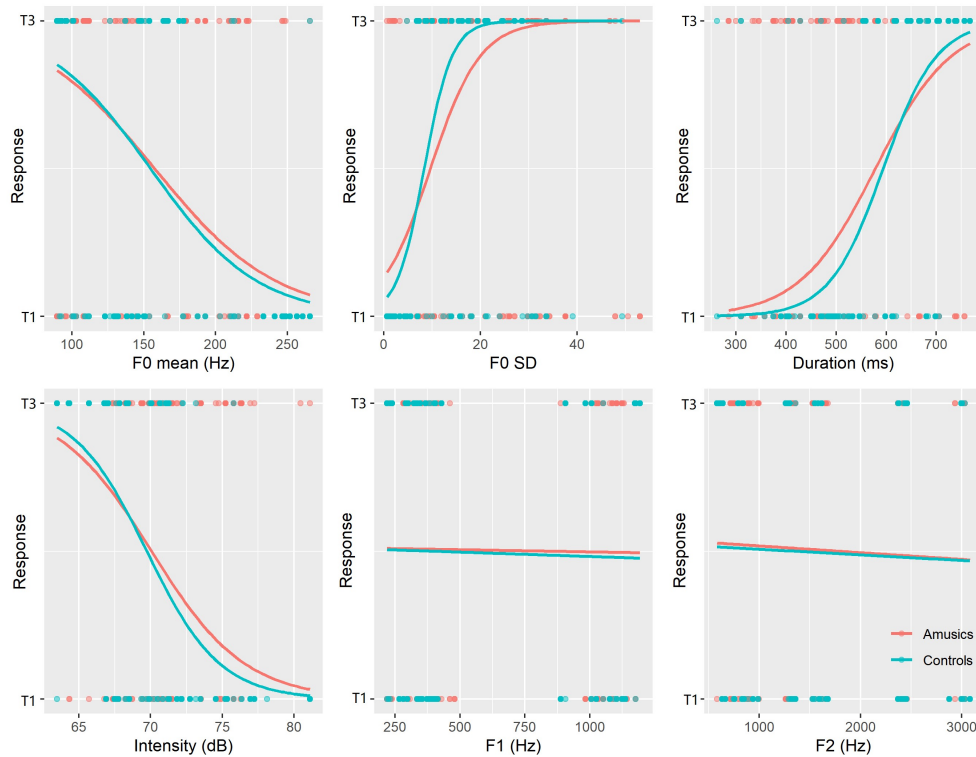


Supplemental Material S12. The relationship between the acoustic cues and phonated tone identification.

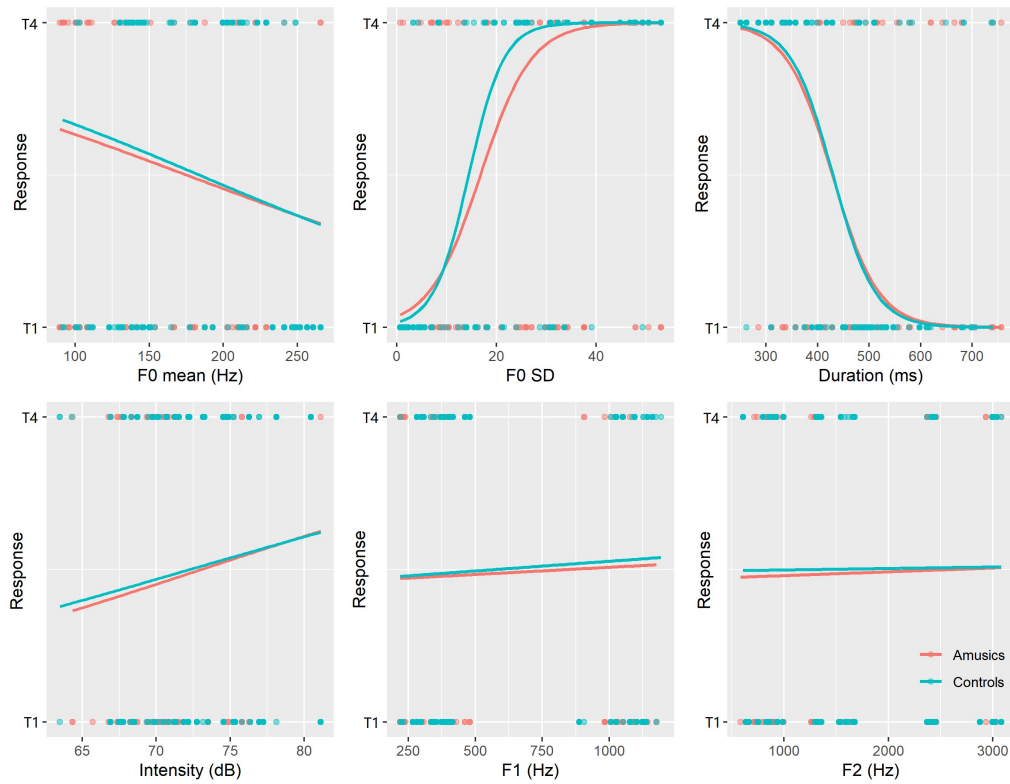
(a) The relationship between the acoustic cues and phonated T2 and T1 identification.



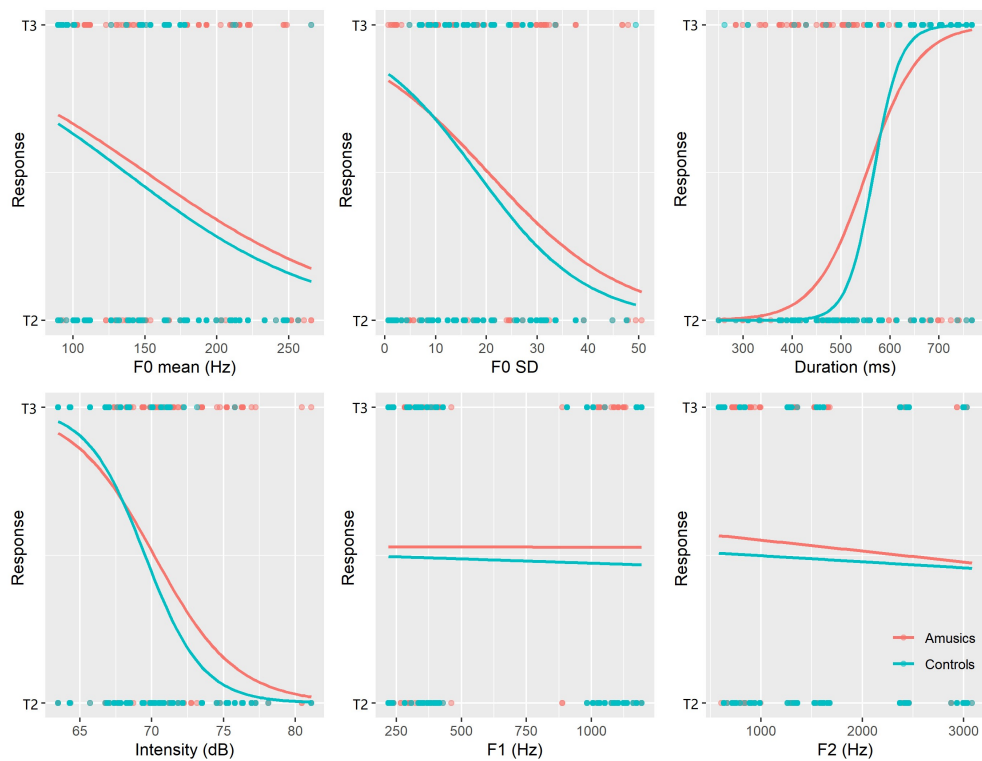
(b) The relationship between the acoustic cues and phonated T3 and T1 identification.



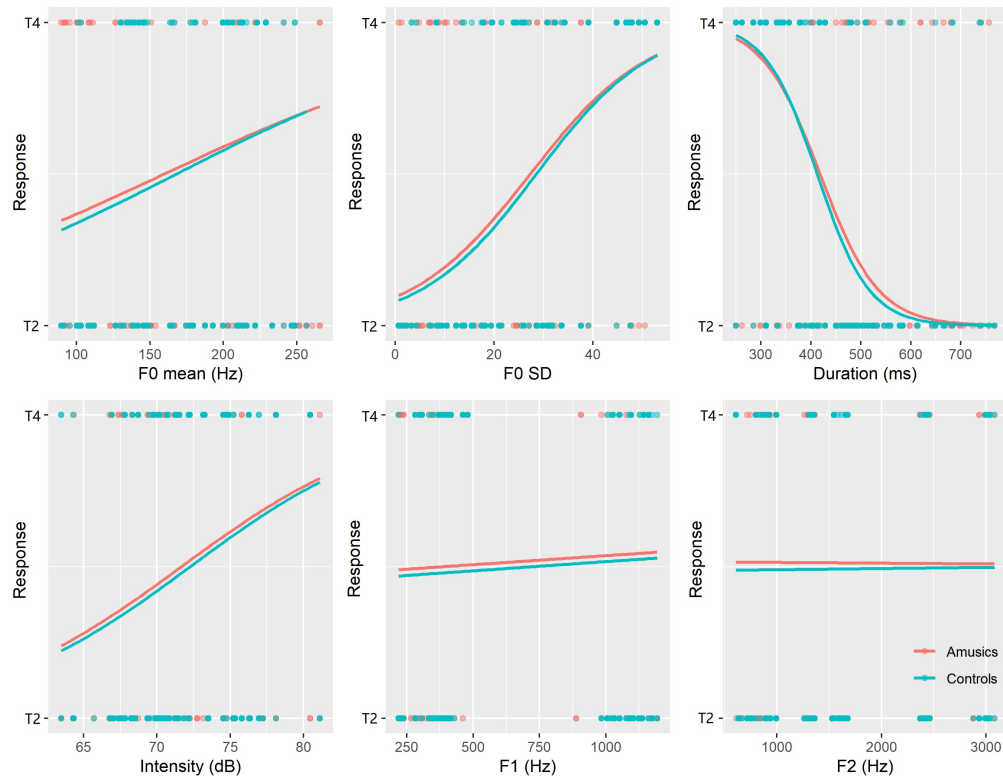
(c) The relationship between the acoustic cues and phonated T4 and T1 identification.



(d) The relationship between the acoustic cues and phonated T3 and T2 identification.



(e) The relationship between the acoustic cues and phonated T4 and T2 identification.



(f) The relationship between the acoustic cues and phonated T4 and T3 identification.

