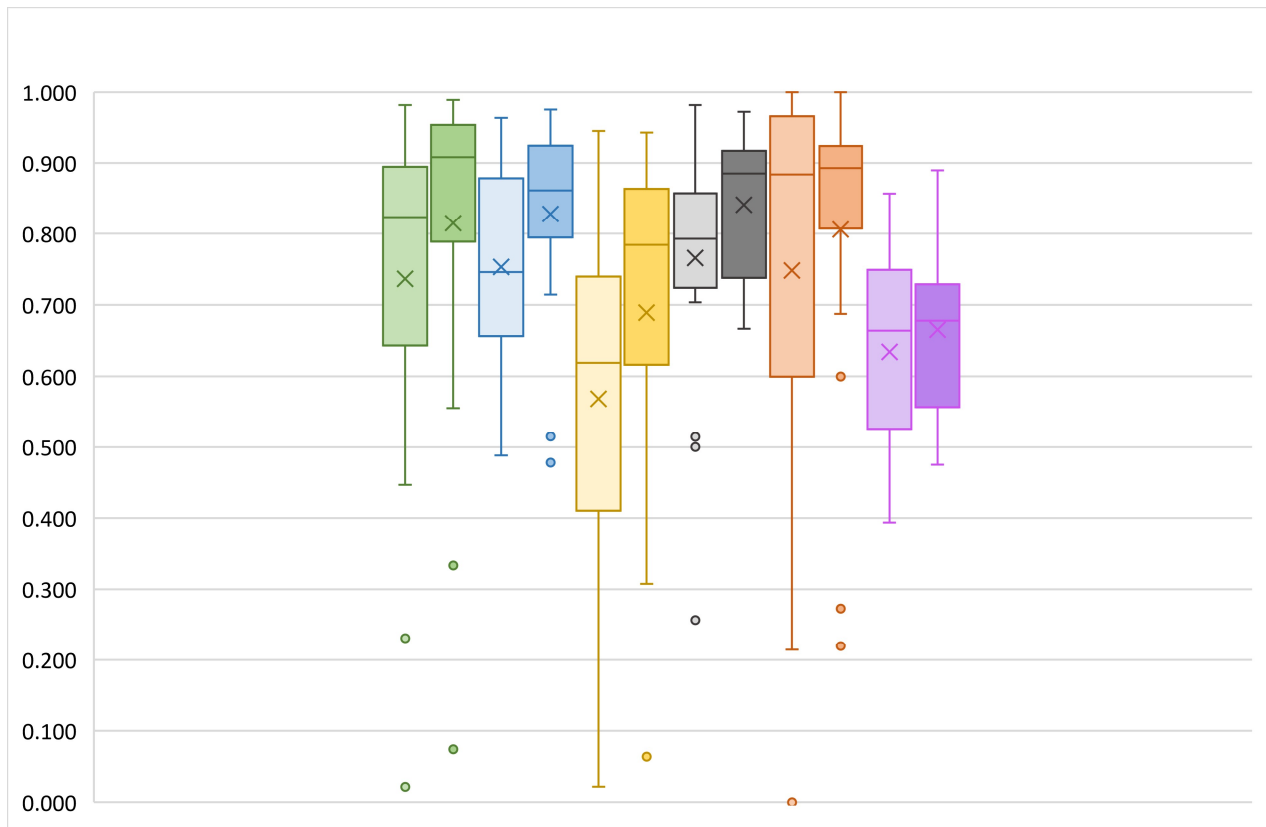


Supplemental Material S10.

Group Data for People With Aphasia for Binary Measure in Each Condition



Note. y-axis = accuracy, 0-100%; Box plots represent group data for binary measures. Measures are color coded with lighter color depicting the SNM data and the darker color depicting the unstructured conversational data; Dots represent outliers; X represents the mean for each measure; Green = Subject+Verb+(Object, if required); Blue = Relevance in the SV(O) sentence frame; Yellow = Complete Utterance; Gray = Grammaticality; Orange = Referential Cohesion; Purple = percent Correct Information Unit and percent Correct Information Unit in Conversation.